

www.flush3p.org

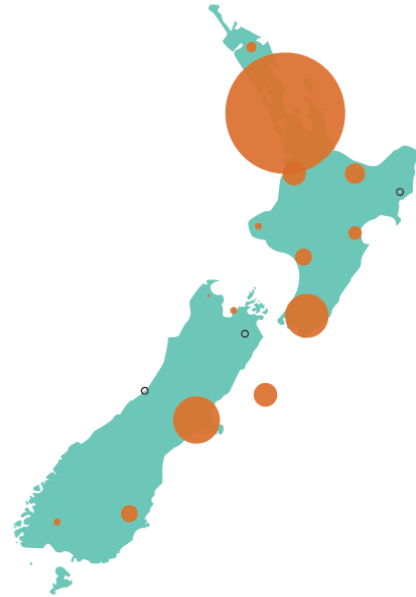
Frank Dick, P.E.

Wipes!

Wipes and COVID-19



Countdown urges customers to not flush wet wipes after increase in blockages during lockdown





**Wipes and fibrous materials
entangle inside pumps**



Plant Influent Screens Conveyor

Operators use scissors and box knives to cut through mass



Septage haulers remove
entangled masses - *routinely* |



**100% plastic or strengthened
plant fibers (RC)
INDESTRUCTIBLE !!**



Combo short fibers / RC
Weaker Construction

Voluntary Code of Practice Doesn't Work



Find This



Do Not Flush Label should be visible on shelf



Do Not Flush Label should be visible where you pull the wipe out



Good contrast, good placement



2015
Washington
Legislator
Interest –
House
Environment
Work Session





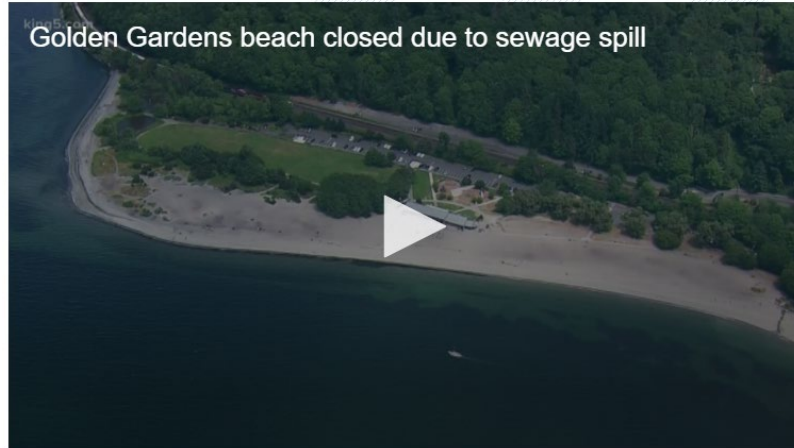
Golden Gardens Park |
Seattle



Spouting maintenance hole
from blocked sewer pipe

165,000 gallons of sewage overflows into water near Seattle's Golden Gardens Park

High levels of bacteria were found in the water off the beach at Golden Gardens Park following a sewer overflow just to the north.



Author: KING Staff
Published: 8:28 AM PDT June 27, 2019
Updated: 6:54 AM PDT June 28, 2019



Washington State Legislature 2020



House Environmental Committee

- Presentation 2015
- Rep. Joe Fitzgibbon

Coalition Just Building Up

- Seattle Public Utilities
- King County
- Vancouver WA
- Association of Washington Cities
- Zero Waste Washington



We Started With Flushable Determination

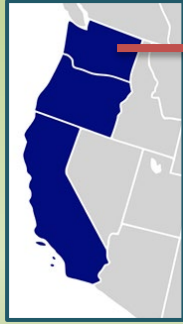
- IWSFG
- Material composition basis for flushable label
 - No plastic
 - No regenerated cellulose



Industry Agreed Only to Labeling Law for nonflushable Products

- Baby
- Surface cleaning
- Sanitizing
- Personal use (hand, makeup, repellent)



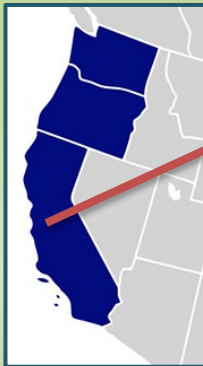


Washington EHSB 2565

effective July 1, 2022

- “Code of Practice” basis
 - WW / Mfr agreement 2017
 - DNF symbol size & general placement on package
- WA added clarifications
 - Package surface area
 - Contrast symbol vs background
 - Cylindrical containers
- Cities and counties enforce
 - State did not want enforcement authority

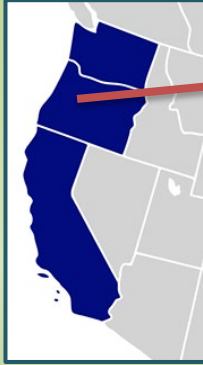




California AB 1672

- All Diaper Wipes
- All wipes petrochemically derived (plastic) used in bathroom settings
- Contrast, size and placement on packaging
- Written warning notice
- Education and Outreach component
- Bill held up end of 2020 session; pick up 2021





Oregon HB 2344 – 2021 session

- Follows California's Legislation except Education and Outreach component
- Similar industry support as Washington state
- So far passed state House chamber 52-1





Issues for Next Legislative Effort

- Flushable definition –
- Material composition, including regenerated cellulose
- Logo placement in online photos



DANKESCHÖN - THANK YOU





Toilets Are **Not** Trashcans.

ONLY FLUSH THE 3 Ps: PEE, POOP & TOILET
PAPER

[Learn More](#)

